



NORTH CAROLINA

Department of Transportation



Post-Florence Airport Status, Needs & Next Steps

Report to the House Select Committee on Strategic Transportation
Planning and Long Term Funding Solutions

Bobby Walston, Director, NCDOT Division of Aviation

October 3, 2018

Division of Aviation Core Functions

- Promote Aviation and Aerospace Development
- Provide Air Transportation for all State Agencies
- Conduct Aviation Safety and Education Programs
- Manage State and Federal Airport Grants and Programs
- Operate the Unmanned Aircraft Systems (UAS) Program



31 Full-Time Employees

Briefing Points



- Airport Impacts from Hurricane Florence
- Current Status of N.C. Public Airports
- Next Steps

Henderson Field (ACZ), Wallace, N.C., Sept. 19, 2018

Impacts During the Storm

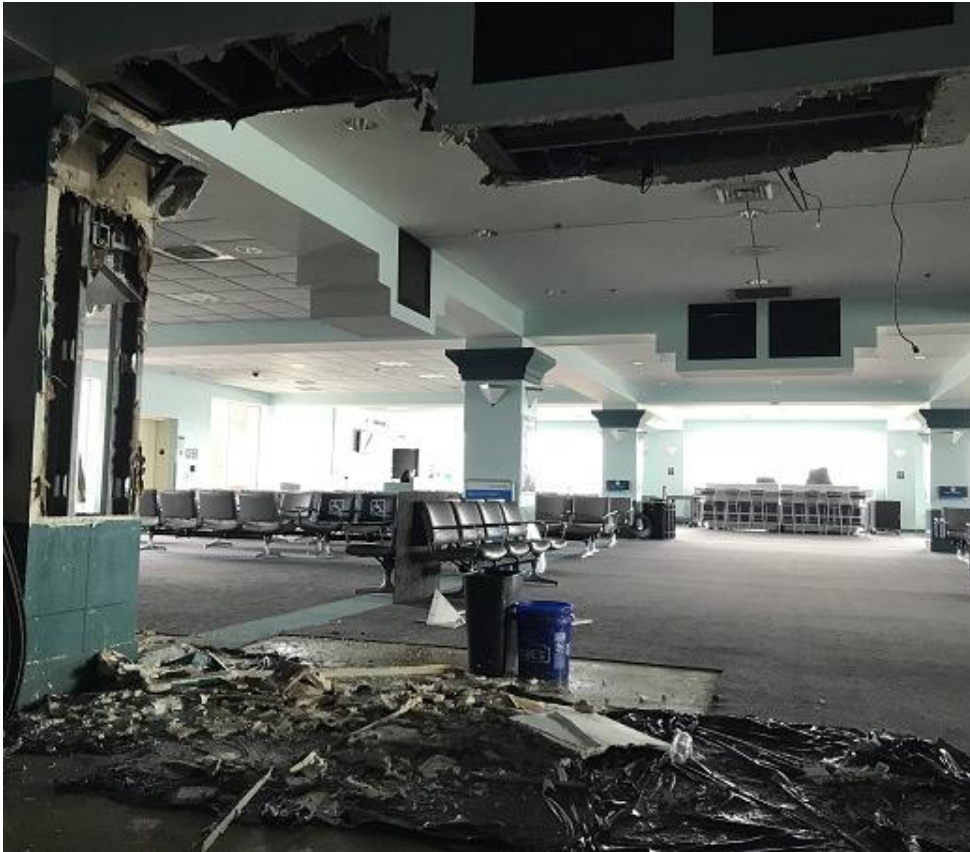


Henderson Field (ACZ) Damage



- Terminal building flooded with about 4 feet of water
- Fuel farm flooded, damaging the entire system
- Beacon will not rotate
- PAPIs (navigational aid) on both ends will need replacing
- 11-12 planes totaled due to flood damage

Wilmington International Airport (ILM) Damage



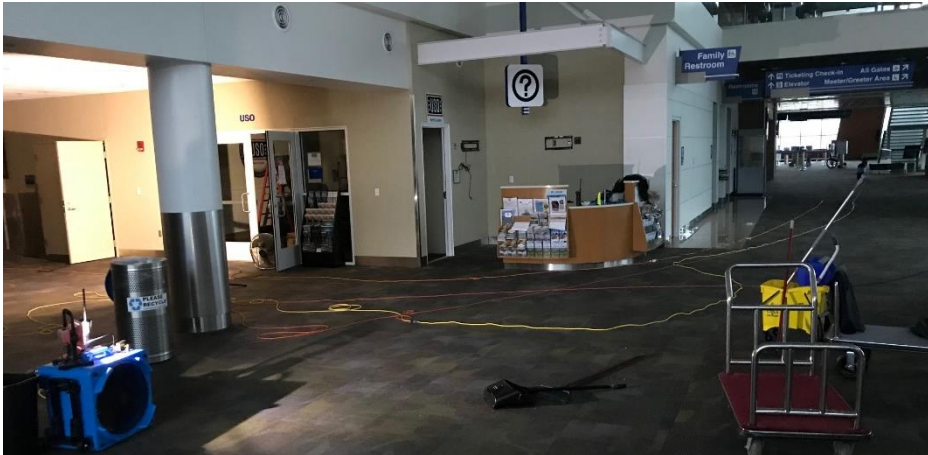
- Terminal:
 - Roof leaks
 - Ceilings, walls, flooring, furniture damage in restrooms, passenger boarding area, administrative offices
 - 3 of 5 passenger boarding bridges
 - Fire alarm panel
- Perimeter fence:
 - Damage (fallen trees, blown over)
 - Washout under fence
- Fire station bay door
- Hangar roof
- Wind cone poles breakaway couplings, lighting and circuit boards
- Airfield electrical vault roof, door canopy, regulators and control system
- FAA tech ops equipment and nav aids
- Private pilots lounge roof, siding
- Leased facility roof and interior damage
- Minor damages to other buildings and hangars, including loose siding, power connections broken and leaks

Coastal Carolina Regional Airport (EWN) Damage



- Hangar damage:
 - Water inundation to 42 hangars storing more than 20 a/c, max water depths 17-37 inches
 - Roof torn off of a set of 7 nested T-hangars
 - Minor T-hangar damage
- Five maintenance building doors blown out
- Electrical vault roof torn off, windsock assembly down
- Holding pond generator/pump flooded
- Small section of perimeter fence down

Albert J. Ellis Airport (OAJ) Damage



- Terminal leaks in multiple locations due to wind-driven rain. Wet carpet, drywall etc.
- Minor leaks in airfield fire station, air traffic control tower and GA terminal
- Catastrophic generator failure
- Trees on perimeter fencing – minor damage
- Flooded roads and minor erosion – multiple locations
- Fence washout – one location (150')
- Minor damage to supplemental airfield wind cone
- Damage to landscaping and multiple roadway signs
- Damage to GA and passenger terminal generators – repairable
- Parking Access Control System (PARCS) damaged

Kinston Regional Jetport (ISO) Damage



- Hangar office flood damage
- Perimeter fence breaches (3)
- Perimeter road washouts (2)
- Gate access and other electrical issues

Moore County Airport (SOP) Damage



- Hangar:
 - Doors off track
 - Roof damage



Fayetteville Regional Airport (FAY) Damage



- Erosion damage
 - Slope failure at end of runway
 - Ditch erosion along airfield drainage pipe
- Terminal leaks (being repaired)

Michael J. Smith Field (MRH) Damage



- Flood damage to structures
- Wind damage to hangars

Clinton-Sampson County Airport (CTZ) Damage



- Terminal wind damage
- Roof leaks
- Water damage to ceiling, fixtures, electronics



Duplin County Airport (DPL) Damage



- Security fence damage

Damage Assessment (as of 9-24-18)

Airport (Symbol)	Damage
Henderson Field (ACZ)	Terminal, fuel farm, beacon, nav aids, 11-12 planes
Wilmington International Airport (ILM)	Terminal, perimeter fence, fire station, hangar roof, wind cone poles, electrical, nav aids, pilots lounge roof, leased facility roof and interior
Coastal Carolina Regional Airport (EWN)	42 hangars, five maintenance buildings, electrical vault roof, holding pond generator, perimeter fence
Albert J. Ellis Airport (OAJ)	Terminal roof leaks, interior damage, generator damage, flooded/eroded roads, landscaping, signage, parking control system, airfield wind cone, fence washout
Kinston Regional Jetport (ISO)	Hangar office, perimeter fence breaches, perimeter road washouts, electrical failures
Moore County Airport (SOP)	Hangar roof and door
Fayetteville Regional Airport (FAY)	Slope failure at end of runway, airfield drainage pipe ditch erosion, terminal leaks
Michael J. Smith Field (MRH)	Structures, hangars
Clinton-Sampson County	Terminal wind damage, roof leaks, water damage to ceiling, fixtures, electronic
Duplin County Airport (DPL)	Security fence

Next Steps for Damage Repair



Wilmington International Airport

- Complete damage assessments and cost estimates
- Determine appropriate funding source (airport insurance, local, state, FAA, FEMA)
- Provide appropriate Division grants and technical assistance support

Questions/Comments



Bobby Walston, P.E.
Director, NCDOT Division of Aviation

